

## Comprehensive analysis of zener diodes: Characteristics, mechanisms, and real-world applications

Dr. Lokeshwar Patel<sup>1</sup>, Subodh Dewangan<sup>2</sup>

<sup>1</sup> Assistant Professor, Department of Physics, Govt. Lochan Prasad Pandey College, Sarangarh, Chhattisgarh, India

<sup>2</sup> Project Assistant, Department of Pure & Applied Physics, Guru Ghasidas Vishwavidyalaya, Bilaspur, Chhattisgarh, India

### Abstract

This paper presents a comprehensive analysis of the Zener diode, a critical component in modern electronics known for its unique ability to operate in reverse breakdown mode. Unlike conventional diodes, Zener diodes are specifically designed to allow current flow in the reverse direction when the voltage exceeds a specified threshold, known as the Zener breakdown voltage. This paper elaborates on the internal working principles of Zener diodes, their construction, and the underlying mechanisms of Zener and avalanche breakdown. It also explores their voltage-current (V-I) characteristics, which showcase their behavior in both forward and reverse bias conditions. Furthermore, the paper outlines the various applications of Zener diodes, particularly their role as voltage regulators and protection devices in sensitive electronic circuits. The analysis also compares Zener diodes with standard PN junction diodes and highlights the advantages that make them suitable for high-precision applications. This study aims to provide a detailed understanding of Zener diode functionality, making it valuable for students, researchers, engineers, and practitioners in the field of electronics and electrical engineering.

**Keywords:** Zener diode, voltage regulation, breakdown mechanism, avalanche effect, V-I characteristics, semiconductor devices

### Introduction

The Zener diode is a specially designed semiconductor device that plays a crucial role in electronic circuits requiring a stable voltage source. Unlike standard diodes that conduct current only in one direction (forward bias), Zener diodes are designed to conduct in the reverse direction once the applied voltage exceeds a certain limit, known as the Zener breakdown voltage. This unique property allows the Zener diode to maintain a nearly constant voltage over a wide range of current variations, making it an excellent component for voltage regulation and protection.

Constructed from silicon and heavily doped, Zener diodes possess a narrow depletion region that enables a high reverse current without damaging the device. Their ability to precisely control voltage in electronic circuits makes them invaluable in designing stable power supplies, voltage references, and over-voltage protection systems.

Named after Clarence Zener, the physicist who discovered the breakdown effect, Zener diodes are now a standard part of electronic design, found in everything from consumer electronics to industrial control systems. This paper aims to explore their fundamental properties, working principles, types of breakdown, and applications in modern technology.

flow not only in the forward direction like a regular PN junction diode, but also in the reverse direction when a specific voltage is reached. This specific voltage is called the Zener breakdown voltage ( $V_z$ ).

### How It Works

- In forward bias (anode more positive than cathode), a Zener diode behaves like a normal diode, conducting current once the threshold voltage ( $\sim 0.7V$  for silicon) is surpassed.
- In reverse bias (cathode more positive than anode), the diode blocks current like a normal diode—until the reverse voltage reaches the breakdown voltage ( $V_z$ ).
- Once this threshold is exceeded, the diode starts conducting in reverse but in a controlled and safe manner, thanks to its heavy doping and narrow depletion region.

This reverse conduction occurs due to one of two mechanisms

1. **Zener Breakdown:** (dominant when  $V_z < 5.6V$ ) – due to quantum mechanical tunneling.
2. **Avalanche Breakdown:** (dominant when  $V_z > 5.6V$ ) – due to impact ionization.

### V-I Characteristics of Zener Diode

The Voltage-Current (V-I) characteristics of a Zener diode illustrate how the device behaves under both forward and reverse bias conditions.

Forward Bias Region

- Acts like a normal diode.
- Current begins to flow after overcoming the forward threshold voltage ( $\sim 0.3-0.7V$  for silicon).
- Beyond this point, the current rises sharply with small voltage increases.

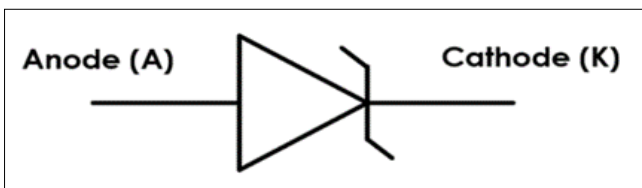


Fig 1: Zener Diode Symbol

### Working Principle of Zener Diode

The Zener diode is a type of diode that allows current to

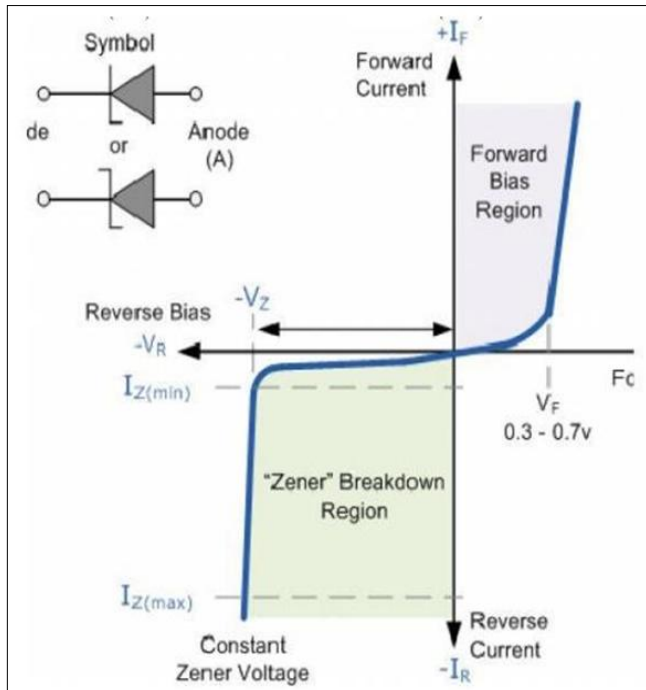


Fig 2: V-I Characteristics of Zener Diode

**Reverse Bias Region (Key Focus Area)**

- Initially, only a tiny leakage current flow.
- As reverse voltage increases and reaches the Zener breakdown voltage (V<sub>Z</sub>), the diode starts conducting in reverse.
- This region is known as the breakdown region.
- In this region
  - a. The voltage across the diode remains nearly constant at V<sub>Z</sub>.
  - b. The current increases sharply with a small increase in voltage.
  - c. The diode is not damaged if the current remains within the safe operating range (I<sub>Zmin</sub> to I<sub>Zmax</sub>).

**Key Points from the V-I Curve**

- **Knee point:** Where the breakdown begins.
- **I<sub>Z</sub> (min):** Minimum current needed to maintain regulation.
- **I<sub>Z</sub> (max):** Maximum current the diode can handle without damage.
- **V<sub>Z</sub>:** Zener voltage, constant in the breakdown region.

**Zener Diode as Voltage Regulator (Detailed Explanation with Circuit Working)**

One of the most important and widely used applications of a Zener diode is its role as a **voltage regulator**. A voltage regulator ensures that the output voltage remains constant even when there are fluctuations in the input voltage or the load current.

**Basic Circuit Description**

The typical Zener diode voltage regulator circuit consists of:

- A Zener diode connected in reverse bias.

- A series resistor (R<sub>S</sub>) connected between the power supply and the Zener diode.
- A load resistor (R<sub>L</sub>) connected in parallel with the Zener diode.

**How the Circuit Works**

1. The input voltage (V<sub>S</sub>) is applied to the circuit.
2. The series resistor (R<sub>S</sub>) drops the excess voltage and limits the current through the Zener diode.
3. Once the reverse voltage across the Zener diode reaches V<sub>Z</sub>, it begins conducting in reverse.
4. The voltage across the load (R<sub>L</sub>) becomes fixed at V<sub>Z</sub>, providing a stable and regulated output voltage (V<sub>out</sub> = V<sub>Z</sub>).
5. Any excess input voltage is dropped across the series resistor, and changes in load current are managed by the diode adjusting the current through itself.

**Key Conditions for Proper Regulation**

- Input voltage V<sub>S</sub> must be greater than V<sub>Z</sub>.
- Zener current must stay between I<sub>Z(min)</sub> and I<sub>Z(max)</sub> for proper regulation.
- R<sub>S</sub> must be carefully selected to ensure the diode does not exceed its power rating.

**Real-World Use**

- Power supply circuits
- DC voltage stabilizers
- Reference voltage generators
- Low-noise signal conditioning

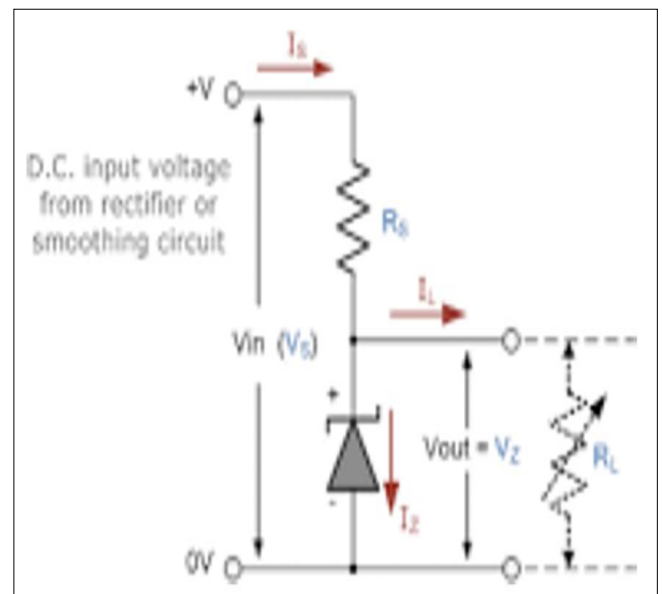


Fig 3: Zener Diode Regulator

**Zener Breakdown vs Avalanche Breakdown**

Zener and Avalanche breakdown are two different mechanisms by which a diode can conduct in reverse. While both result in current flowing in the reverse direction after a certain voltage is reached, their causes and behavior differ.

Table1: Comparison

Feature	Zener Breakdown	Avalanche Breakdown
Voltage Range	Typically occurs at < 5.6V	Typically occurs at > 5.6V
Doping Level	Happens in heavily doped diodes	Happens in lightly doped diodes
Depletion Region	Narrow	Wider
Cause	Quantum tunneling of electrons through the energy barrier	Impact ionization due to collision of high-

		energy carriers
Temperature Coefficient	Negative – breakdown voltage decreases with increase in temperature	Positive – breakdown voltage increases with increase in temperature
Current Behavior	Current increases sharply and suddenly	Current increases gradually
Primary Application	Used in Zener diodes for voltage regulation	Seen in regular diodes at high reverse voltages (not preferred for regulation)
Stability	Very stable and repeatable	Less stable for precise regulation

**Applications of Zener Diode**

Zener diodes are versatile components widely used in electronics due to their stable reverse breakdown voltage. Here are key application areas

**1. Voltage Regulation**

Zener diodes maintain a constant output voltage despite fluctuations in input voltage or load. This makes them ideal for

- Power supply regulators
- DC voltage reference sources

**2. Overvoltage Protection**

They protect sensitive electronic components from sudden voltage spikes by clamping the voltage at a safe level.

**3. Voltage Reference**

In analog and digital circuits, Zener diodes provide a precise and constant voltage reference to ensure accurate operation of components like comparators and ADCs.

**4. Switching Operations**

Zener diodes can act as switches in logic circuits when precise control over threshold voltage is required.

**5. Waveform Clipping**

Zener diodes are used in waveform shaping circuits to clip voltage beyond a desired level in both polarities (dual-Zener arrangement).

**6. Voltage Shifting and Clamping**

In signal processing circuits, Zener diodes shift or clamp voltage levels to fit within safe input ranges.

**Advantages of Zener Diode**

Zener diodes offer several benefits that make them ideal for compact and efficient circuit designs

1. **Compact Size:** Perfect for use in small electronic devices like mobile phones and embedded systems.
2. **Low Cost:** Affordable compared to other voltage regulating components.
3. **High Precision:** Provides accurate voltage control for delicate components.
4. **High Reliability:** Stable performance over long durations.
5. **Power Dissipation:** Can handle relatively high power depending on the model.
6. **Bidirectional Protection:** Can protect both AC and DC circuits with dual-diode setups.
7. **Temperature Tolerance:** Certain Zener voltages (around 5.6V) have excellent thermal stability.

**Table 2:** Comparison: Zener Diode vs. PN Junction Diode

Parameter	Zener Diode	PN Junction Diode
Current Flow	Allows current in both forward and reverse (after Vz)	Allows current only in forward direction
Doping Level	Heavily doped	Lightly doped
Breakdown Voltage	Designed for precise low breakdown voltage	Higher breakdown voltage, not used intentionally
Reverse Operation	Operates in reverse bias as voltage regulator	Reverse bias typically causes damage
Usage	Voltage regulation, protection, reference circuits	Rectification in AC to DC converters
Ohm's Law Compliance	Does not follow Ohm's law in breakdown region	Follows Ohm's law in forward bias

**Conclusion**

Zener diodes are vital semiconductor devices engineered to function in reverse bias mode at precise breakdown voltages. Their ability to maintain a constant output voltage regardless of variations in input voltage or load current makes them an essential part of modern electronic systems. By leveraging either the Zener or avalanche breakdown mechanism (depending on the design voltage), these diodes find widespread use in voltage regulation, signal shaping, overvoltage protection, and reference circuits.

The accurate breakdown behavior, ease of integration, and cost-effectiveness have made Zener diodes a preferred choice in both analog and digital systems. Understanding the differences between Zener and PN junction diodes, along with proper application techniques, allows engineers to design robust and reliable circuits. Whether used in consumer electronics, instrumentation, or power systems,

Zener diodes continue to play a foundational role in electronics engineering.

**References**

1. J Millman, Halkias C C, Microelectronics, New York McGraw-Hill, 1979, 45–48.
2. RC Dorf, The Electrical Engineering Handbook, Boca Raton: CRC Press, 1993, 457.
3. Fluke Corporation, Calibration: Philosophy in Practice, Fluke, 1994, 7–10.
4. Garg RK, A Dixit, P Yadav, Basic Electronics, Firewall Media, 2008, 150.
5. TTI Inc, "What is a Zener Diode?", [Online]. Available: <https://www.tti.com>
6. Components, "Zener Diodes Guide," [Online]. Available: <https://uk.rs-online.com>
7. Testbook, "Zener Diode – Physics Topic," [Online]. Available: <https://testbook.com>

8. Mano MM, Digital Logic and Computer Design, Pearson Education India, 2016.
9. Boylestad R, Nashelsky L, Electronic Devices and Circuit Theory, 11th ed., Pearson, 2012.
10. Sedra, A Smith KC, Microelectronic Circuits, 7th ed., Oxford University Press, 2014.
11. Mehta V, Mehta R, Principles of Electronics, S. Chand Publishing, 2013.
12. Neamen DA, Electronic Circuit Analysis and Design, 2nd ed., McGraw-Hill, 2001.
13. Wakerly JF, Digital Design Principles and Practices, 4th ed., Pearson, 2005.
14. Razavi B, Fundamentals of Microelectronics, 2nd ed., Wiley, 2013.
15. NPTEL, "Zener Diode Operation and Characteristics," [Online]. Available: <https://nptel.ac.in>
16. Horowitz P, Hill W, The Art of Electronics, 3rd ed., Cambridge University Press, 2015.
17. Bell D, Electronic Devices and Circuits, 5th ed., Oxford University Press, 2008.
18. Electronics Tutorials, "Zener Diode Tutorial," [Online]. Available: <https://www.electronics-tutorials.ws>
19. Texas Instruments, "Voltage Regulation Using Zener Diodes," Application Note, 2020.
20. ON Semiconductor, "Zener Diode Selection Guide," [Online]. Available: <https://www.onsemi.com>